



EVO Manufacturing

Jeep Wrangler JK/JL and JT Gladiator

JK/JL/JT Quarter Pounder Front Bumper

EVO- 3057/B/AL



**Important:** Keep hardware pack containing jog plate and jog plate hardware.



Jog Plate, Hardware



Before starting installation procedure please read <http://evomfg.com>Returns-Warranties-Shipping>

**CAREFULLY READ AND FOLLOW ALL INSTRUCTIONS IN THIS MANUAL AND KEEP FOR FUTURE REFERENCE. IF YOU HAVE ANY QUESTIONS ABOUT THE PRODUCT CALL EVO MANUFACTURING. FAILURE TO FOLLOW GUIDELINES COULD RESULT IN MALFUNCTION OF PARTS OR INJURY. PLEASE HAVE A TRAINED PROFESSIONAL ASSIST WITH OR INSTALL ALL PRODUCTS. INSTALLING EVO MFG PRODUCTS OR KITS DEMANDS SPECIFIC KNOWLEDGE, TOOLS AND EXPERIENCE. GENERAL KNOWLEDGE OF HOW TO USE LATER SPECIFIED TOOLS AND/OR LIMITED EXPERIENCE WITH EVO MFG PRODUCTS MAY NOT BE ENOUGH TO PROPERLY COMPLETE THESE TASKS. SOME OF EVO MFG PRODUCTS MAY REQUIRE TWO OR MORE PEOPLE TO INSTALL SAFELY AND CORRECTLY. DO NOT ATTEMPT ALONE, ALWAYS ENLIST THE HELP OF TRAINED PROFESSIONAL WHEN NEEDED.**

**Notes: Set Up Before installation**

**Cutting and grinding will be necessary for this installation.**

**May need to use a second person to ease install.**

**Keep all mounting bolts loose (installed but not torqued) we will torque later at the end of complete installation**

**READ BEFORE INSTALL:**

It is generally a good idea to apply Loctite to all threaded bolts.

ALWAYS wear safety glasses and other approved safety gear when working on a vehicle.

All supplied bolts torqued according to chart at end of instruction.

It is recommended all installation be performed by a trained professional. Some modification may have to be done.

Paint all unfinished surfaces after install is complete.

On aluminum bumpers, heat should not be applied due to aluminum properties



Parts included: Table below shows EVO MFG Quarter Pounder Bumper.

Description	#	Part # B	Part # AL	Quantity
¼ Pounder Stubby Bumper	1	EVO-10038B	EVO-10038AL	1
Spacer Plate	2	EVO-10037B	EVO-10037AL	6
Hardware Pack	3	EVO-770014	EVO-770014	1
Jog Plate	4	EVO-12033B	EVO-10039AL	1
Jog Plate Hardware Pack	5	EVO-770045	EVO-770045	1



Do not discard hardware pack containing jog plate and jog plate hardware. Critical for winch install.



#### **Recommended Tools:**

- Allen set/ Driver Sockets
  - Impact with standard sockets
  - Sawzall/Cut off wheel or similar
  - Drill and ½" bit/ Step bit
- 



#### **Safety Steps for installation**

- For installing EVO MFG products always use wheel chokes to block rear tires from rolling.
  - Always make sure you have everything necessary ready before install.
  - If you have to, carefully lift front of vehicle by front frame rails extending suspension until tires leave the ground, place frame on approved jack stands for vehicle. Verify all lines/wires are not over extended.
  - Remove tires if needed for easier install.
  - Make sure to wear safety equipment (eye protection, hand protection, foot protection etc.) at all times during installation.
  - Make sure all safety precautions have been taken.
  - Always check and replace any part of vehicle that is worn or broken before starting install.
  - Do not mix anything EVO with weaker alternatives.
  - It is generally a good idea to apply liquid threadlock to all bolts.
  - Tighten included hardware to torque specifications in bottom table unless it is otherwise specified, factory bolts should be torqued to factory Jeep specifications.
- 





Various factory bumper options are available. Factory bumper removal steps therefore will vary. This is just a guide, follow factory manual if further instruction is required.

### **INSTALL:**

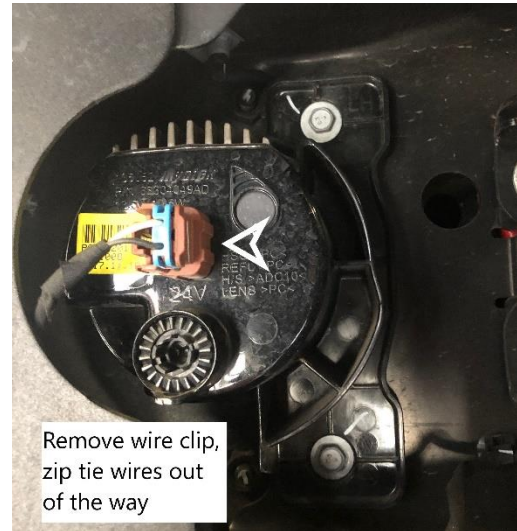
Safely park car on flat ground, put in park and chock wheels.

---

1. Remove factory front bumper by removing the 8 nuts on the inside of the bumper and remove the push clips on underside of bumper.
- 



2. Remove wires from fog lamps, remove bulbs (if applicable). Reference Jeep manual for removal of bulb, different year and models may vary.
- 



3. For JL and JTs remove the factory frame plates. This will not be reused.
- 

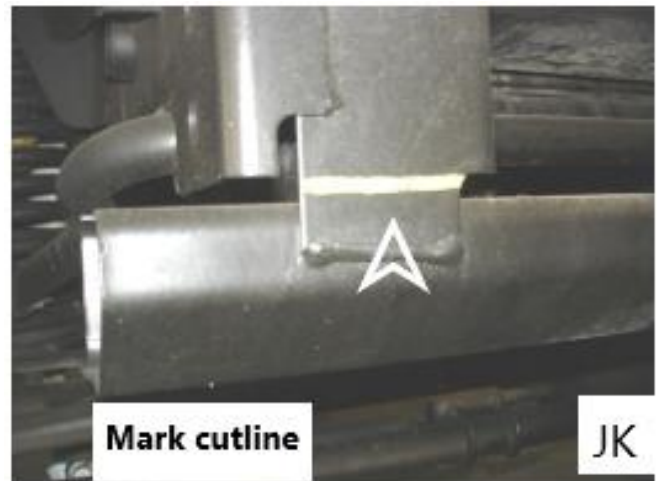


4. Remove upper factory plastic in front of grill. Start by removing plastic clips/screws then pull out plastic.
- 



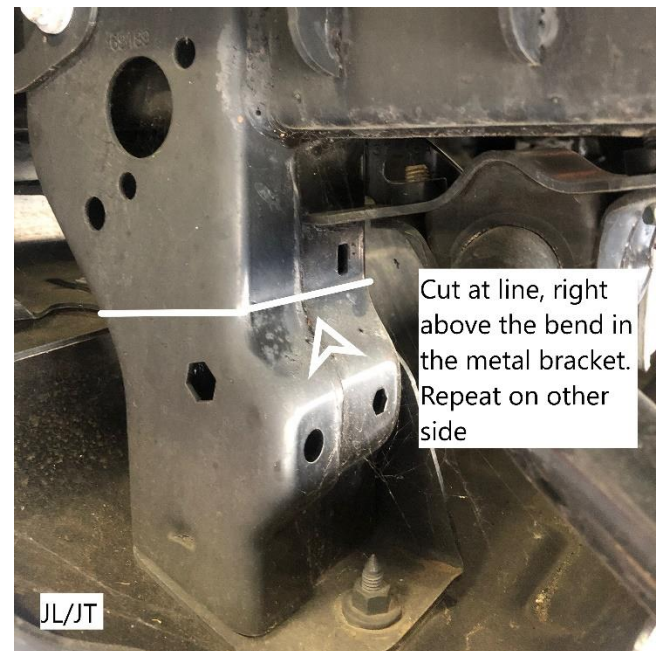
5. Mark cut lines as shown. For the JK the cut line should be drawn right above crossmember on tabs that hold crossmember to frame bracket.
- 

JK cut line:



6. For the JL and JT the cut line should be drawn right above the bend in the frame bracket as shown.
- 

JL/JT cut line:





7. Using a Sawzall, cut off wheel or similar, remove/cut the lower front cross member using cut lines. Cut front and back of both sides on crossmember.

---

Use proper safety precautions and safety equipment. Make sure no wires are in the cutting path. Only cut specified area.

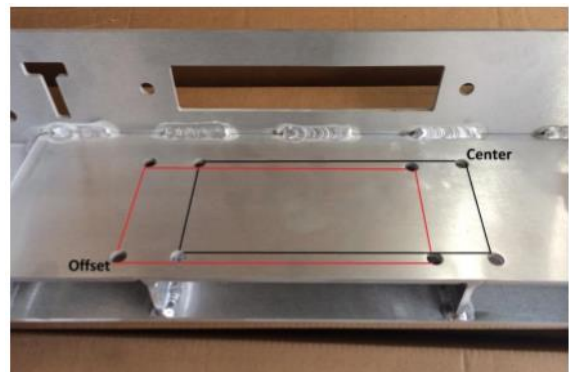
---



For installing winch:

If a winch is to be installed. Follow the directions that came with your winch and mount to the inner 4 bolt pattern on the inside of the ¼ Pounder. The EVO MFG Quarter Pounder bumper will accept center mount winches as well as offset winches.

---



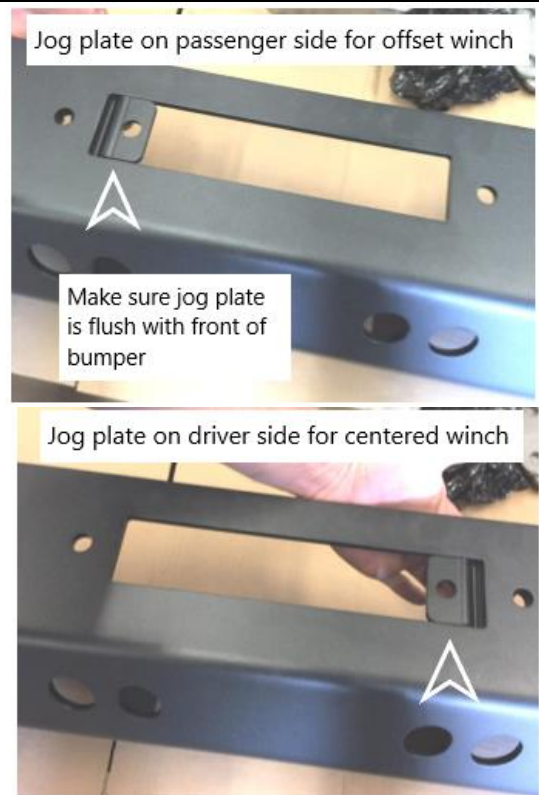
For fairlead adjustment using the included EVO fairlead jog plate: Using jog plate hardware kit, mount jog plate to correct side of fairlead mount depending on type of winch. Put washer on bolt, then insert through bumper then jog plate, tighten nut onto backside of bolt.

Mount EVO Fairlead Jog Plate on passenger side for Offset Winch

---

Mount EVO Fairlead Jog Plate on driver side for Centered Winch

---







Verify that the supplied  $\frac{1}{2}$ " bolts will insert through all the 8 factory holes in your Jeeps frame. If not, drill the holes that do not fit with a  $\frac{1}{2}$ " drill.

8. Using the supplied hardware (2.0" without DRings, 2.5" with D-rings/Stinger all with washers) install through the upper right and left holes of both sides (4 Bolts total).

If you are using the EVO DRings/Stinger, these should be mounted at this time on the outer face of the bumper.

9. To space bumper forwards, on the inside face of the  $\frac{1}{4}$  Pounder, the Jeep JK will need two spacer plates per side on the inside mounting face of the bumper (in front of frame). For the Jeep JL and JT you will need three spacer plates.

10. Install  $\frac{1}{4}$  Pounder with spacer plates to factory frame.

11. Install supplied washers and nuts and 4 remaining lower bolts.

12. Torque all nuts to 80 lb/ft .



Optional Rubicon electronic sway bar mount relocation:

13. Remove bolt from the front mount of the swaybar motor. (long bolt that goes through the rubber isolator)

14. The motor will now freely rotate on the axis of the swaybar.

15. Rotate the swaybar motor rearward as much as possible.

---



16. With a 1/2" diameter drill mark off 1/2" from tip down on the drill with tape.

17. You may need to loosen the two bolts on the passenger side frame rail that holds the swaybar to the frame to get your drill to drill straight into the new mounting hole.

---



18. In the new mounting hole, drill from the passenger side toward the center of the vehicle 1/2" deep (up to tape mark) into new mounting hole. DO NOT DRILL MORE THAN 1/2".

19. Using the same bolt removed earlier install through the factory rubber isolator and into the newly drilled hole.

---





After Install:

- Tighten all bolts securing purchased parts to specified locations.
- After completing installation using provided instructions, go through all steps again to make sure nothing was missed, not tightened or improperly assembled.
- Some components may need to be purchased separately.
- Check turn signals, headlights, fog lights (if applicable), taillights, blinkers and windshield wipers.
- Adjust mirrors, speedometer and headlights if needed.
- Make sure all gauges are fully operational.
- Drive the vehicle slowly for a couple minutes, looking and listening for abnormal noises while driving. After modification of a vehicle there will be differences in driving experiences and capabilities, be mindful of that.
- Inspect and Retorque all Bolts after 500 miles of completed installation and regularly thereafter.
- Some modification may be required.

Recommended Torque:

Size	Grade 2		Grade 5		Grade 8		18-8 S/S	
	Coarse	Fine	Coarse	Fine	Coarse	Fine	Coarse	Fine
<b>#4*</b>	-	-	-	-	-	-	5.2	-
<b>#6*</b>	-	-	-	-	-	-	9.6	-
<b>#8*</b>	-	-	-	-	-	-	19.8	-
<b>#10*</b>	-	-	-	-	-	-	22.8	31.7
<b>1/4</b>	4	4.7	6.3	7.3	9	10	6.3	7.8
<b>5/16</b>	8	9	13	14	18	20	11	11.8
<b>3/8</b>	15	17	23	26	33	37	20	22
<b>7/16</b>	24	27	37	41	52	58	31	33
<b>1/2</b>	37	41	57	64	80	90	43	45
<b>9/16</b>	53	59	82	91	115	129	57	63
<b>5/8</b>	73	83	112	128	159	180	93	104
<b>3/4</b>	125	138	200	223	282	315	128	124
<b>7/8</b>	129	144	322	355	454	501	194	193
<b>1†</b>	188	210	483	541	682	764	287	289