



# FITTING INSTRUCTIONS

<b>Product:</b>	<b>T13 Outback Frontal Protection System</b>
<b>Vehicle:</b>	<b>Toyota LandCruiser 100 Series IFS 02+</b>
<b>Part No.</b>	<b>070SB13N81A</b>

## Australian Standards Relating to Installing Vehicle Frontal Protection Systems (VFPS): AS 4876.1-2002

- Do not attach V.F.P.S. to vehicle using anchorages not intended for this purpose (e.g. engine mounting bolts), other than those specified by the V.F.P.S. manufacturer in this instruction.
- Do not use this product for any vehicle make or model other than those specified by the V.F.P.S. manufacturer (as above).
- Do not remove any plaques or labels from the V.F.P.S.
- Do not modify the structure of the V.F.P.S. in any way.

## Warranty

- If any product or part of a product manufactured by TJM is found to be defective during a period of three (3) years after the date of purchase, TJM shall repair (at TJM's discretion) the defective product or part.
- Any defect in a product distributed by TJM, but not manufactured by TJM, shall be dealt with in accordance with, and to the extent of, the warranty offered by the manufacturer of that product.
- TJM does not warranty that the products manufactured by it comply with the laws of the place where those product are purchased or used. It is the sole responsibility of the purchaser to ascertain whether products being purchased, or the affixation of those products to any other object, comply with local laws.
- Except to the extent described in this warranty, TJM shall not be liable for any other claims, including claims arising from incorrect fitment, product or vehicle modification, faulty design, the use of the product on any indirect special or consequential damage or injury to any person, company or other entity.
- Modification or alteration to any product manufactured by TJM to enable fitment in conjunction with other vehicle accessories or modifications (e.g. lift kits) will void any warranty claims.

- **Read instructions fully before commencing fitment.**
- **Left hand and Right hand components are determined as seated in the vehicle.**
- **Check for (and remove) any build up in all captive nuts fitted to the FPS.**

<b>Bolt tensions</b>	<b>Dia. (mm)</b>	<b>Nm</b>	<b>ft.lbs</b>	<b>Dia. (inch)</b>	<b>Nm</b>	<b>ft.lbs</b>
All bolt tensions are as follows unless otherwise specified.	5	5	4	1/4"	9	7
	6	9	7	5/16"	22	15
	8	22	16	3/8"	33	27
	10	44	32	7/16"	55	43
	12	77	57	1/2"	86	66

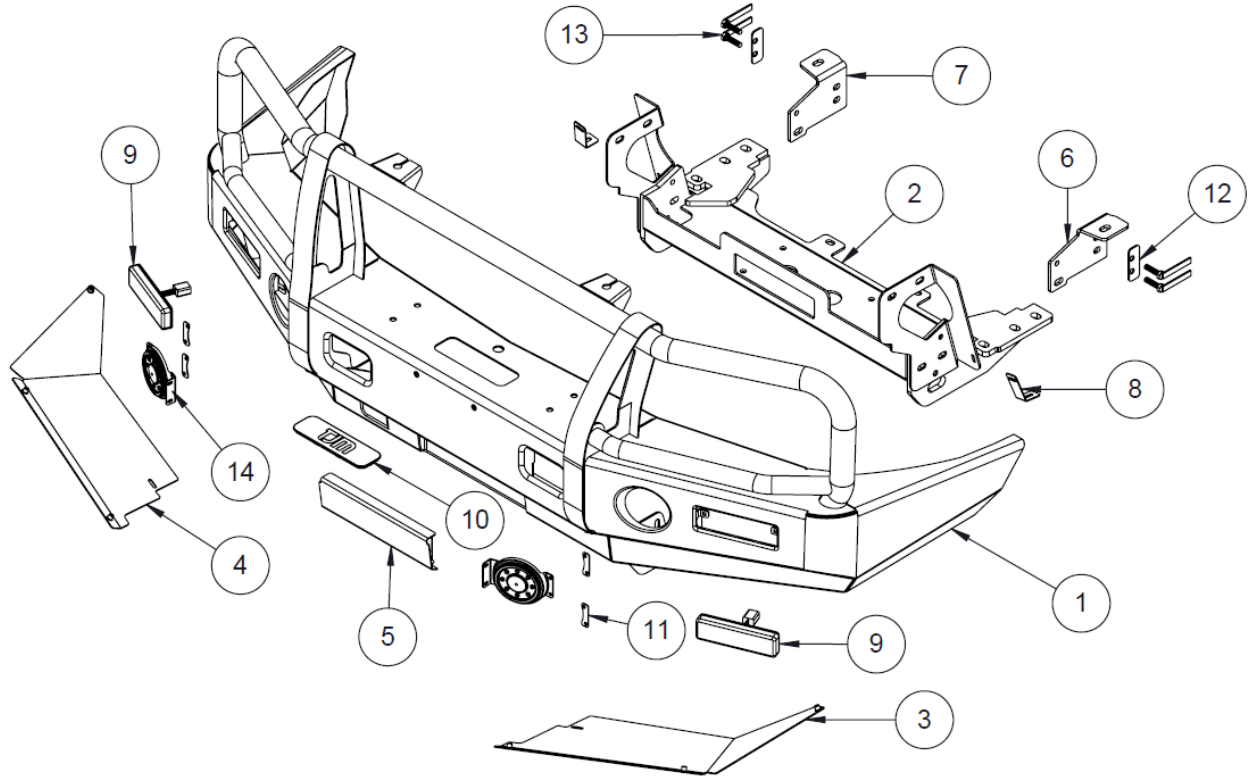
**For further information contact T.J.M. Head Office on (07) 3865 9999. Distributors Australia wide.**



# FITTING INSTRUCTIONS

**Product:** T13 Outback Frontal Protection System  
**Vehicle:** Toyota LandCruiser 100 Series IFS 02+

**Part No.** 070SB13N81A



ITEM NO.	Description	Qty	Part Number
<b>PARTS LIST</b>			
1	T13 Outback FPS	1	89649
2	Chassis Mount / Winch Frame	1	89621
3	Wing Under Guard LH	1	89577L
4	Wing Under Guard RH	1	89577R

<b>FITTING KIT</b>			
5	Fairlead Cover	1	89586
6	Chassis Angle LH	1	89627L
7	Chassis Angle RH	1	89627R
14	Fog-Light Blanking Cover	2	92091
9	LED Parker/Indicator	2	92600
10	Winch Slot Cover Plate	1	92106

<b>BOLT KIT</b>			
N/A	M6 x 1.0 x 16mm Hex Head Bolt	6	K1232
N/A	M6 x 1.0 x 20mm Hex Head Bolt	14	K0550
N/A	M6 x 1.0 Flange Nut	8	K3033
N/A	M6 x 1.0 Nyloc Nut	4	K0605
N/A	M6 Spring Washer	8	K0915
N/A	M6 x Ø12.5mm Flat Washer	24	K0897

ITEM NO.	Description	Qty	Part Number
<b>BOLT KIT (cont'd)</b>			
N/A	M8 x 1.25 x 20mm Hex Head Bolt	2	K0552
N/A	M8 x Ø19mm Flat Washer	2	K0628
N/A	M10 x 1.25 x 45mm Hex Head Bolt	2	K0939
N/A	M10 x 1.25 Nyloc Nut	6	K3099
N/A	M10 x Ø30mm Flat Washer	8	WSST-W13
N/A	M12 x 1.25 x 30mm Hex Head Bolt	4	K0569
N/A	M12 x 1.25 x 45mm Hex Head Bolt	6	K0772
N/A	M12 x 1.25 x 85mm Hex Head Bolt	2	K0975
N/A	M12 x 1.75 x 150mm Hex Head Bolt	2	K0892
N/A	M12 x 1.25 Nyloc Nut	12	K1200
N/A	M12 x 1.75 Nyloc Nut	2	K0608
N/A	1/2" x Ø1-1/4" x 2.5mm Flat Washer	28	K0623
N/A	Nylon Plug	4	K0665
12	Spacer Plate (3mm)	2	F-310
13	M10 Bolt-on-Plate	4	F-464
11	Fog-Light Washer Plate	4	88057
8	Wing Guard Mount	2	89585
N/A	FPS Mount Drilling Template	1	89811-T

For further information contact T.J.M. Head Office on (07) 3865 9999. Distributors Australia wide.



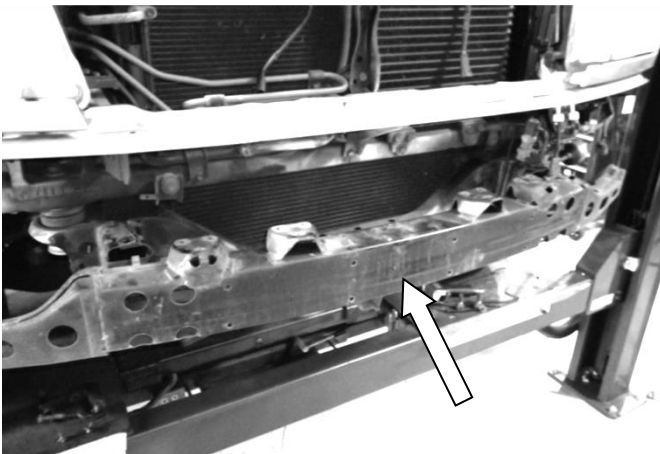
# FITTING INSTRUCTIONS

<b>Product:</b>	<b>T13 Outback Frontal Protection System</b>
<b>Vehicle:</b>	<b>Toyota LandCruiser 100 Series IFS 02+</b>

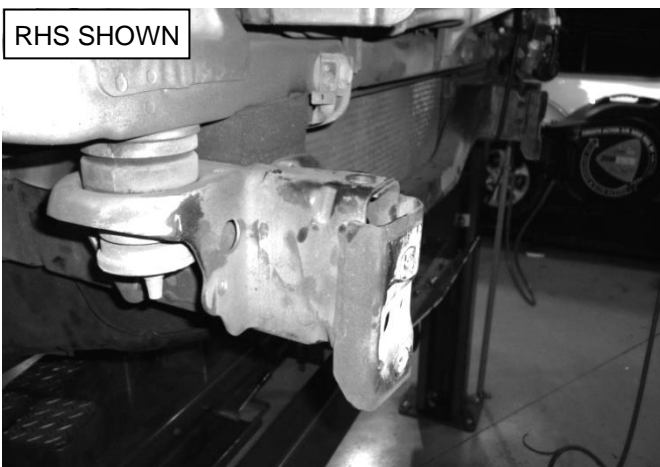
<b>Part No.</b>	<b>070SB13N81A</b>
-----------------	--------------------



1. Remove the grille & carefully set it aside.
2. From inside each front wheel arch, remove (& discard) the screws that are securing the top ends of the bumper in place.
3. Remove (& discard) the plastic plugs (3) securing the top of the bumper to the bumper support panel.
4. Remove (& discard) the fasteners securing the bumper mounts to the top & bottom of each chassis rail.
5. Remove (& discard) the bumper.



6. Remove (& discard) the front intrusion beam (& fasteners).



7. Remove the tow hooks & shipping lugs from the bottom of each chassis rails (retaining the tow hooks & all of the fasteners whilst discarding the shipping lugs).
8. Re-install the grille to the vehicle.

For further information contact T.J.M. Head Office on (07) 3865 9999. Distributors Australia wide.



# FITTING INSTRUCTIONS

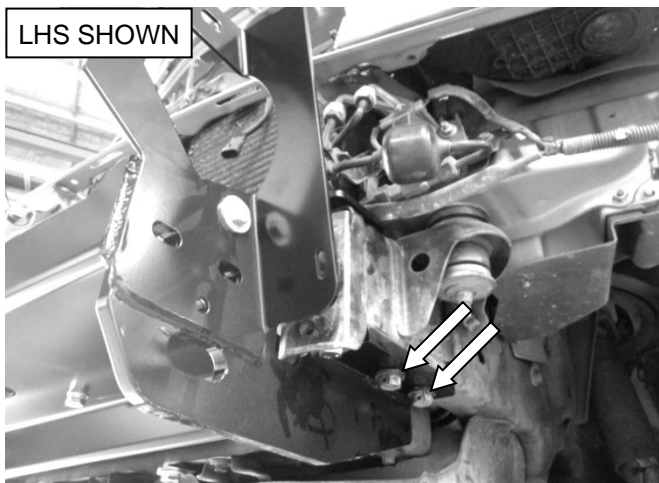
**Product:** T13 Outback Frontal Protection System  
**Vehicle:** Toyota LandCruiser 100 Series IFS 02+

Part No. 070SB13N81A

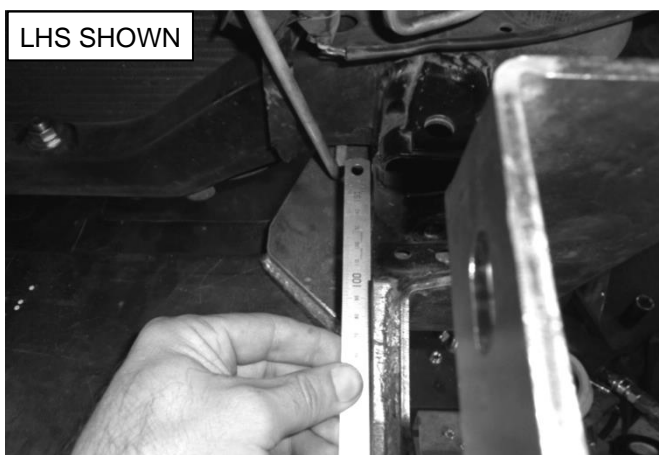
9. As per the table below, route & splice the indicator/park light's wiring to the vehicle, then solder & seal the joins.

LED WIRING		
Ground	Parker	Indicator
White	Brown	Yellow

10. Check the operation of the indicator/park lights & also the fog-lights (optional extra), then unplug the light assemblies.
11. Repeat the previous 3 steps for the opposite side of the vehicle.



12. Lift the chassis mount into position under the chassis rails &, placing the tow hook back in its original location on the chassis mount, loosely secure both sides of the chassis mount in place, through the indicated rear-most slots, using the fasteners retained in Step 7.



13. Centrally align the chassis mount to the chassis rails.
- Use a straight edge from the chassis mount to the inner face of winch frame and make both sides even.***
14. Tension the fasteners installed previously to the appropriate torque settings, listed on Page 1.

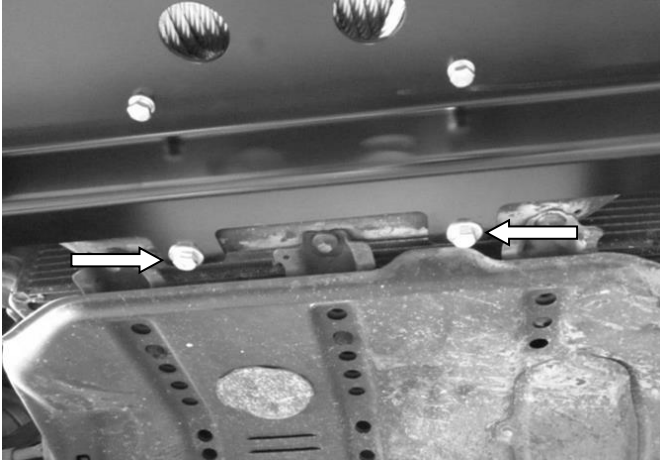
For further information contact T.J.M. Head Office on (07) 3865 9999. Distributors Australia wide.



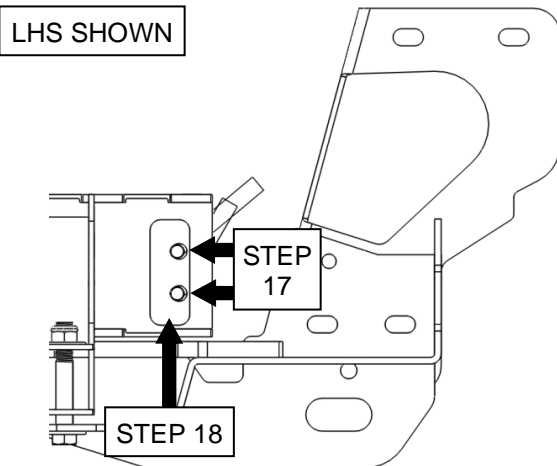
# FITTING INSTRUCTIONS

**Product:** T13 Outback Frontal Protection System  
**Vehicle:** Toyota LandCruiser 100 Series IFS 02+

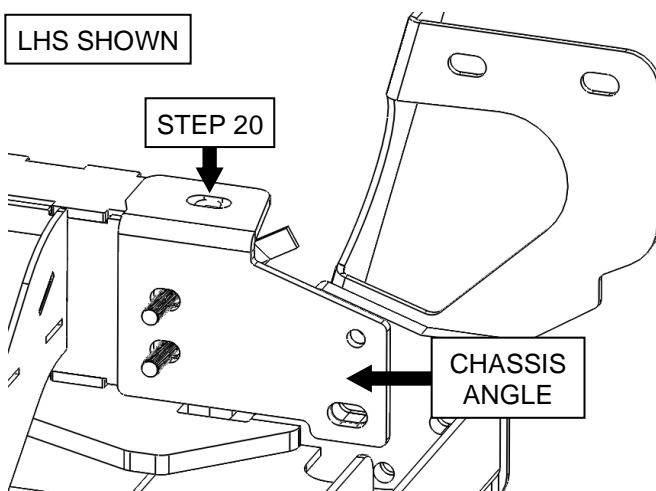
**Part No.** 070SB13N81A



15. From under the chassis mount, secure the rear of the chassis mount to the vehicle cross-member using M12 x 1.25 x 85mm hex bolts (2) 1/2" x Ø1-1/4" flat washers (4) & M12 nyloc nuts (2).
16. Tension the fasteners installed in the previous step to the appropriate torque settings, listed on Page 1.



17. Insert the M10 bolt-on-plates (2) into the end of the chassis rail with the bolts protruding through the two holes, towards the centre of the vehicle.
18. Position a spacer plate over the M12 bolt-on-plates (as shown).



19. Position the chassis angle as shown & loosely secure the M10 bolt-on-plates (from Step 17) using M10 x Ø30mm flat washers (2) & M10 x 1.25 nyloc nuts (2).
20. From under the chassis mount, loosely install an M12 x 1.75 x 150mm hex bolt (1), 1/2" x Ø1-1/4" flat washers (2) & M12 nyloc nut (1) through the indicated hole.

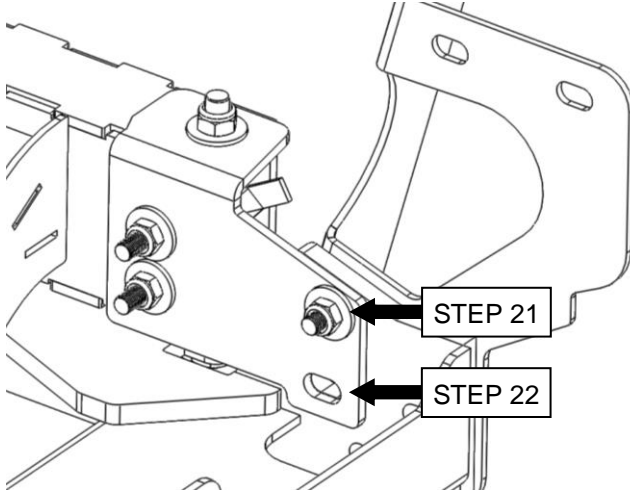
For further information contact T.J.M. Head Office on (07) 3865 9999. Distributors Australia wide.





# FITTING INSTRUCTIONS

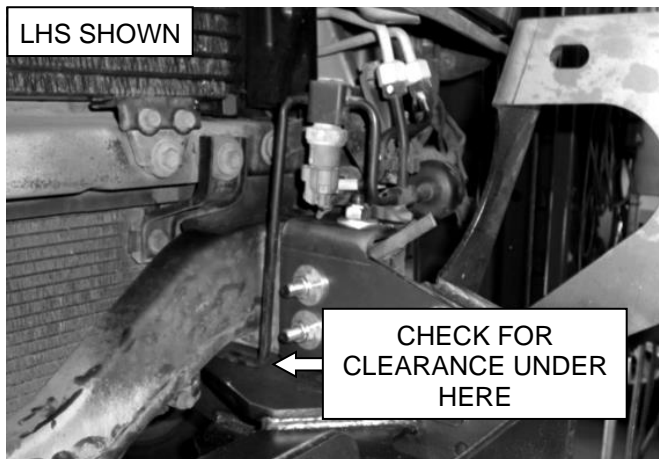
<b>Product:</b>	<b>T13 Outback Frontal Protection System</b>
<b>Vehicle:</b>	<b>Toyota LandCruiser 100 Series IFS 02+</b>
<b>Part No.</b>	<b>070SB13N81A</b>



21. Secure through the forward-most upper hole of the chassis angle using an M10 x 1.25 x 45mm hex bolt (1) M10 x Ø30mm flat washers (2) & M10 nyloc nut (1).
22. Aligning the empty slot on the chassis angle with the slot on chassis mount, tighten the fasteners previously installed to the appropriate torque settings, listed on Page 1.

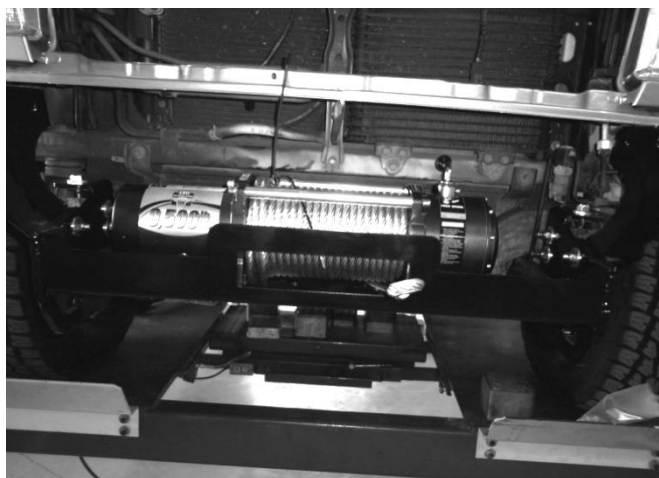
***Check the slot for alignment and adjust if required.***

23. Repeat Steps 17 through to 22 for the opposite side of the vehicle.



24. Ensure that there is adequate clearance around the air-conditioner line to ensure that no chaffing can occur.

***If required, gently manipulate the air-conditioner line to achieve this.***



***Steps 25 & 26 only apply if a winch is to be fitted. Otherwise, please proceed to Step 27.***

25. Referring to the winch fitting instructions, install the winch to the chassis mount / winch frame.

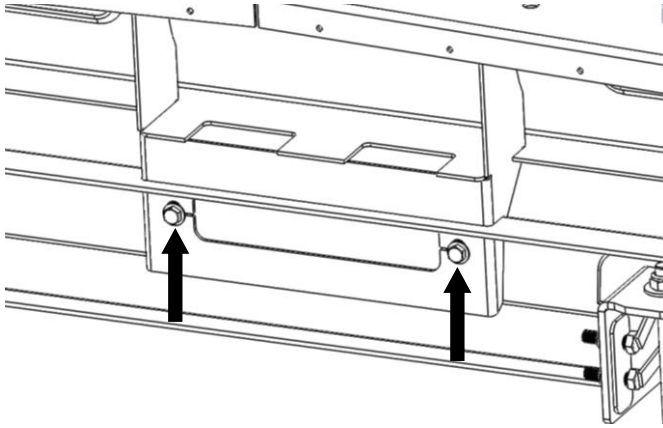
**For further information contact T.J.M. Head Office on (07) 3865 9999. Distributors Australia wide.**



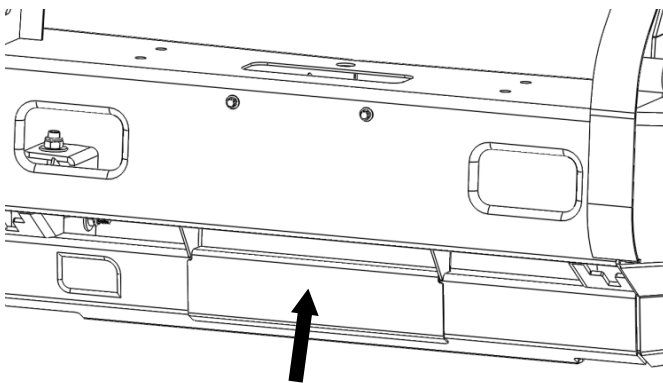
# FITTING INSTRUCTIONS

**Product:** T13 Outback Frontal Protection System  
**Vehicle:** Toyota LandCruiser 100 Series IFS 02+

**Part No.** 070SB13N81A

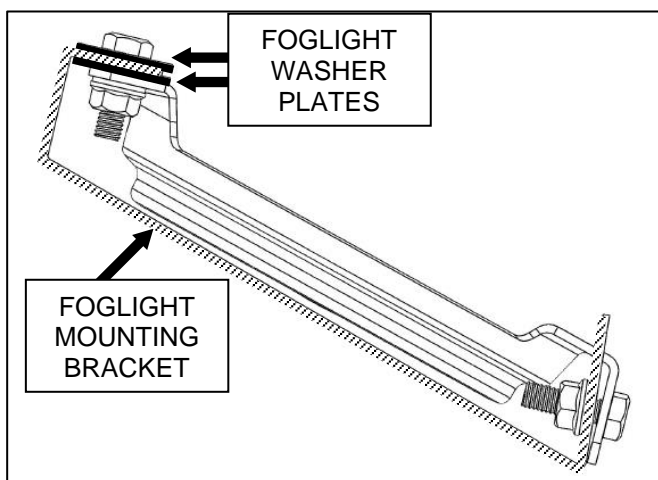


26. Secure the roller fairlead to the front of the FPS, at the indicated locations, ensuring that the bolt heads are positioned inside the FPS.



***Step 27 only applies if no winch has been fitted. Otherwise, please proceed to Step 28.***

27. Position the fairlead cover as shown & secure it in place using M8 x 1.25 x 20mm hex bolts (2) & M8 x Ø19mm flat washers (2).



***If an optional Foglight Kit has been purchased, install it now, referring to the instructions provided with the kit. Otherwise, follow the below steps to install the provided Foglight Blanking Covers.***

28. Sandwich the foglight mounting bracket between the Foglight Washer Plates.  
29. Position the Foglight Blanking Cover as shown opposite.

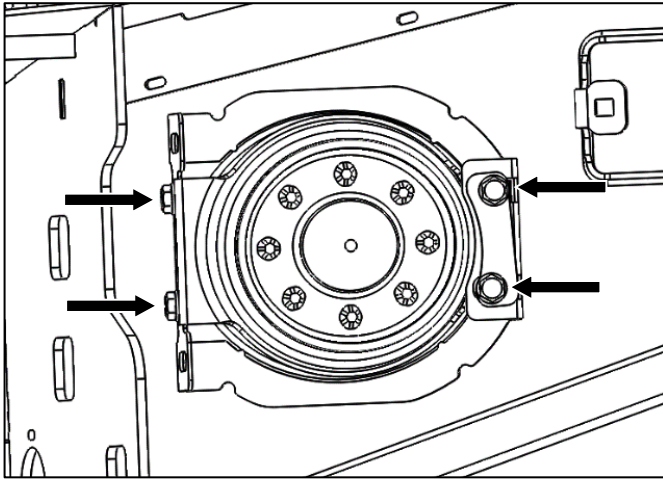
**For further information contact T.J.M. Head Office on (07) 3865 9999. Distributors Australia wide.**



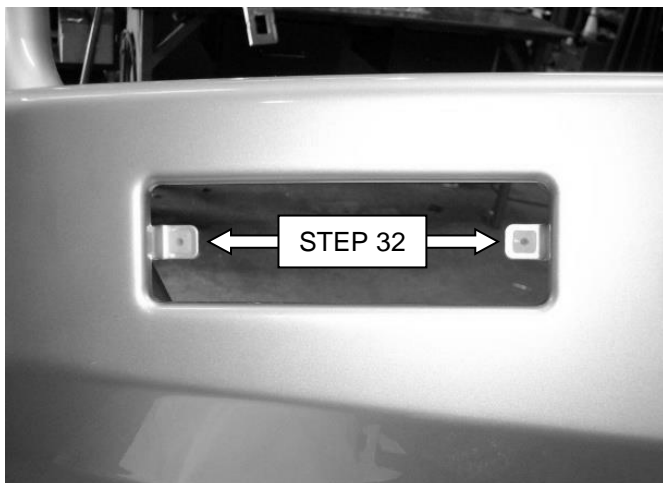
# FITTING INSTRUCTIONS

**Product:** T13 Outback Frontal Protection System  
**Vehicle:** Toyota LandCruiser 100 Series IFS 02+

**Part No.** 070SB13N81A

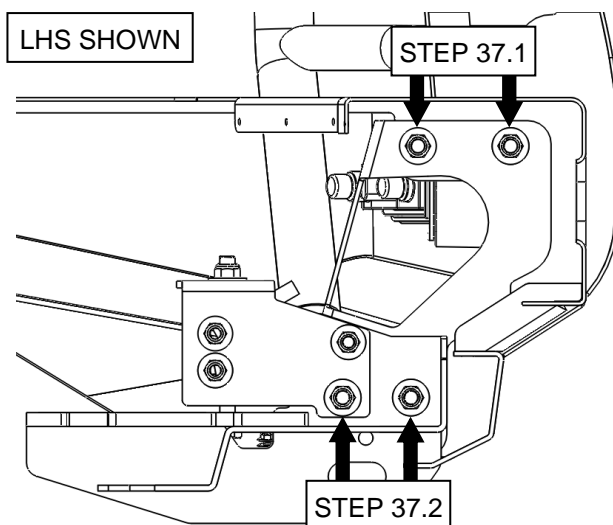


30. Using M6 x 1.0 x 20 Hex Head Screws (4), M6 x Ø12.5mm Flat Washers (4) and M6 x 1.0 Flange Nuts (4), secure the Foglight Blanking Cover to the foglight mounting bracket.
31. Repeat the previous three steps for the opposite side of the vehicle.



32. Insert the nylon plugs supplied, into the square cut-outs for the indicators (as shown).
33. Separate the indicator / park light body from the backing plate.
34. Secure the backing plate to the FPS, using the screws provided with the light assemblies.
35. Supporting the backing plate, re-fit (clip) each indicator / park light body (ensuring that an adequate seal is achieved).

***Ensure that the park light is towards the outside of the vehicle.***



36. Repeat the previous four steps for the opposite side of the vehicle.
37. With the assistance of another person, carefully lift the FPS onto the chassis mount &, on both sides of the chassis mount, loosely secure the FPS in place using the fasteners listed below:
  - 37.1. M12 x 1.25 x 30mm hex screws (4) 1/2" x Ø1-1/4" flat washers (8) & M12 nyloc nuts (4).
  - 37.2. M12 x 1.25 x 45mm hex screws (4) 1/2" x Ø1-1/4" flat washers (8) & M12 nyloc nuts (4).
38. Ensuring that the FPS is level with even clearances, tighten all fasteners to the appropriate torque settings.

**For further information contact T.J.M. Head Office on (07) 3865 9999. Distributors Australia wide.**

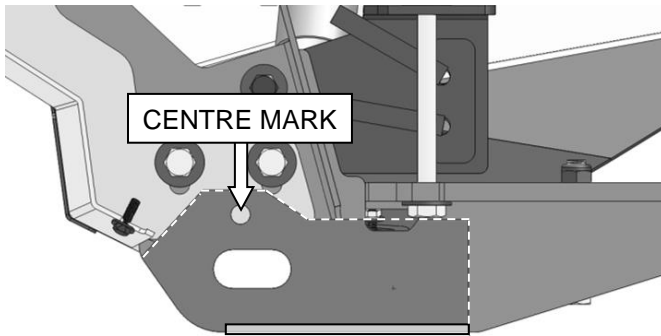




# FITTING INSTRUCTIONS

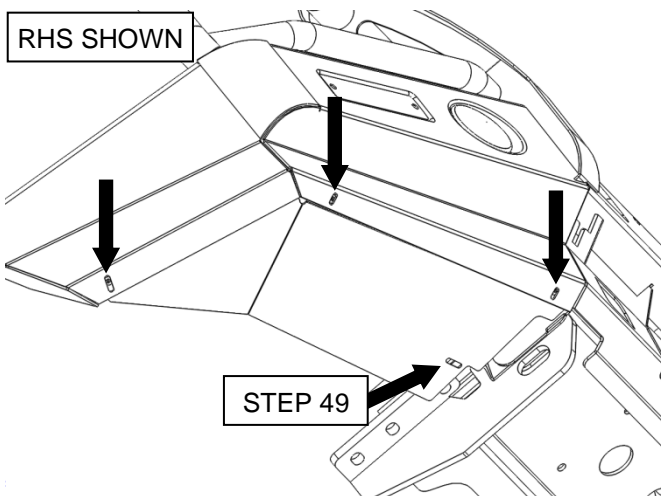
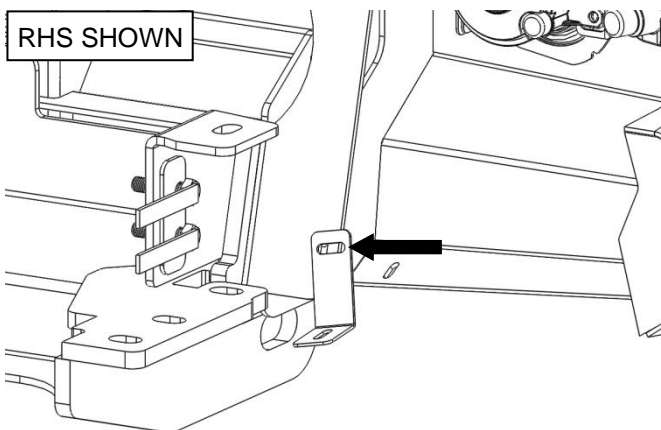
**Product:** T13 Outback Frontal Protection System  
**Vehicle:** Toyota LandCruiser 100 Series IFS 02+

**Part No.** 070SB13N81A



ALIGN THE TEMPLATE USING THE LARGE SLOT & THE BOTTOM EDGE

TAPE ACROSS THE BOTTOM ONLY



39. Trim the supplied "FPS Mount Drilling Template" to shape along the noted edges &, aligning the template as shown, tape it in place.
40. Pull the template taught & mark the center of the indicated hole position, then drill a pilot hole at this point.
41. Check the alignment of the pilot hole with the hole in the chassis mount, then drill the pilot hole out to 12.5mm.
42. Deburr the hole & clean the area/surface of any swarf/debris, then treat the raw exposed surfaces with a rust preventative.
43. Repeat Steps 39 through to 43 for the opposite side of the vehicle.
44. Using M12 x 1.25 x 45mm hex screws (2), 1/2" x Ø1-1/4" flat washers (4) & M12 nyloc nuts (2), pin the FPS through the holes previously drilled.
45. Tension the fasteners installed in the previous step to the appropriate torque settings, listed on Page 1.
46. Position the wing guard mount as shown & loosely secure it in place, using an M6 x 1.0 x 16mm hex bolt (1), M6 x Ø12.5mm flat washers (2) & M6 nyloc nut (1).
47. Repeat the previous step for the opposite side of the vehicle.
48. Position the wing guard inside the FPS (as shown) & secure it in place, at the indicated locations, using M6 x 1.0 x 20mm hex bolts (3), M6 spring washers (3) & M6 x Ø12.5mm flat washers (3).
49. Secure the wing guard in place at the wing guard mount, using an M6 x 1.0 x 16mm hex bolt (1), M6 x Ø12.5mm flat washers (2) & M6 nyloc nut (1).
50. Repeat the two previous steps for the opposite side of the vehicle.

For further information contact T.J.M. Head Office on (07) 3865 9999. Distributors Australia wide.



# FITTING INSTRUCTIONS

<b>Product:</b>	<b>T13 Outback Frontal Protection System</b>
<b>Vehicle:</b>	<b>Toyota LandCruiser 100 Series IFS 02+</b>

<b>Part No.</b>	<b>070SB13N81A</b>
-----------------	--------------------



51. Using M6 x 1.0 x 16mm hex bolts (2), M6 x Ø12.5mm flat washers (2) & M6 spring washers (2), secure the number-plate in place at the front of the FPS.
52. Connect all of the relevant wiring looms & check the operation of the indicators, park lights, fog-lights, winches, etc to ensure that they are functioning correctly.
53. Place the winch slot cover in place in the winch viewing hole.
54. Ensure that all fasteners are fully tightened to the appropriate torque settings & that, as a result of fitting the FPS, no vehicle components are crushed or will chafe.

**For further information contact T.J.M. Head Office on (07) 3865 9999. Distributors Australia wide.**